



Water Level Control System For Steam Boilers

Description

Water level controls have magnetically operation. they are designed to meet all the requirements for automatic on/off control of boiler feed pump, burner cut-out, high and/or low alarm or any combination of these.

Conversion Heads

this VABC heads are designed to fit into existing float chambers, and provide an economical method of updating boiler water level controls to the latest models.

Operation

this type is a element electro-hydraulic control with an electronic feedback. the system comprises a control unit float chamber, a feed line modulating valve and a control box.

Sizing Of Valve Lids

A range of valve lids and associated seats are available and provide linear flow characteristics. a table of cv values for water (S.G. =1) is given below for valve lids in fully open position. $CV = \frac{Q}{\sqrt{P}}$

Q : actual evaporation of boiler plus 15 per cent margin kg/hr.

P: pump discharge pressure kg/cm² when passing Q quantity of water minus (boiler max. working pressure plus 0.4 kg/cm²).

Type of lid	Cv=kg/hr for 1 kg/cm ₂
A	1.690
B	2.260
C	3.030
D	4.100
E	5.480
F	7.480
G	9.840
H	13.520
I	18.480

Mounting

BXO types are chamber mounted and BDO types are direct mounted.



تماس 24 ساعته حتی تعطیلات

Water Level Control System For Steam Boilers

Chamber mounted



BXO 150 psi

BXO 300 psi

Sizing of chamber mounted model

Type number	Operating range	No of Switches max	Flanged screwed connection	Dimensions (mm)							
				C	G	H	H1	L	W	F	
CAST IRON CHAMBER –WORKING PRESSURE: 13KG/CM²											
BX02/1	62	1	-	BS4504.25-16/11	-	102	193	303	366	182	160
BX05/2	150	2	4	BS4504.25-16/11	-	102	293	497	468	277	160
BX07/2	250	2	5	BS4504.25-16/11	-	102	394	602	557	370	160
FABRICATED STEEL CHAMBER –WORKING PRESSURE :21KG/CM²											
BX09/1	62	1	-	BS4504.25-40/2	-	87	193	303	366	182	160
BX10/2	150	2	4	BS4504.25-40/2	-	87	293	497	468	277	160
BX11/2	250	2	6	BS4504.25-40/2	-	87	393	602	557	370	160
FABRICATED STEEL CHAMBER –WORKING PRESSURE:32KG/CM²											
BX12/1	62	1	-	BS 450.25-40/2	-	102	193	303	559	372	160
BX13/2	150	2	4	BS 450.25-40/2	-	100	293	497	559	372	160
BX14/2	250	2	6	BS 450.25-40/2	-	100	393	602	559	370	160

تماس 24 ساعته حتی تعطیلات



02166479486

0912 8448763

0919 0345384



Water Level Control System For Steam Boilers

Electrical Characteristics

Single pole and double -throw operation for:

AC:

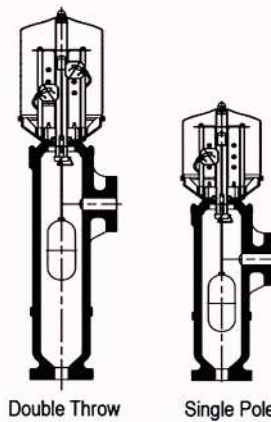
Maximum voltage 250 V
 Maximum current 5A
 Maximum power factor 0.4
 Maximum power 2000 VA

DC:

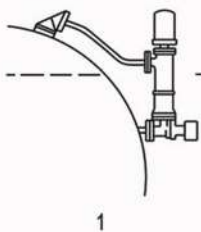
Resistive
 Maximum power 100W
 Maximum voltage 250V
 Maximum current 5A

Inductive

Maximum voltage 250 V
 Maximum current 0.5A
 Maximum time constant 40ms
 Maximum power 100W

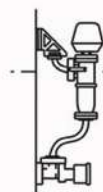


Arrangements of vertical controllers on various types of boiler



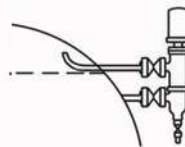
1

side and bottom
 entry chamber with
 sequencing valve on
 horizontal boiler



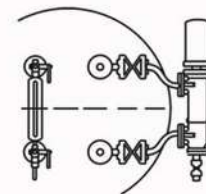
2

side and bottom
 entry chamber
 with sequencing
 valve on vertical
 boiler



3

side and side entry
 chamber on horizontal
 boiler



4

side and side entry
 chamber on steam
 drum of water tube
 boiler

تماس 24 ساعته حتی تعطیلات

09190345384 09128448763 02166479486

www.Controltak.com

Controltak@gmail.com

تلگرام
 اینستاگرام

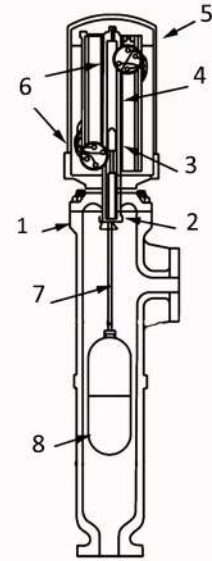
Controltak

Control-Tak

Water Level Control System For Steam Boilers

Material of chamber mounted model

Num.	Part name	Material	
1	Chamber	Cast iron GG25	Cast steel A216-WCB
2	Stop cap	Stainless Steel	
3	Magnet	-	
4	Center tube	Stainless Steel	
5	Switch head	Aluminum	
6	Switch units	Cast ceramic	
7	Float road	Stainless Steel	
8	float	Stainless Steel	



How to order water level control

Working pressure and temperature (bar g , C)

Connection type

Mounting type



02166479486

0912 8448763

0919 0345384



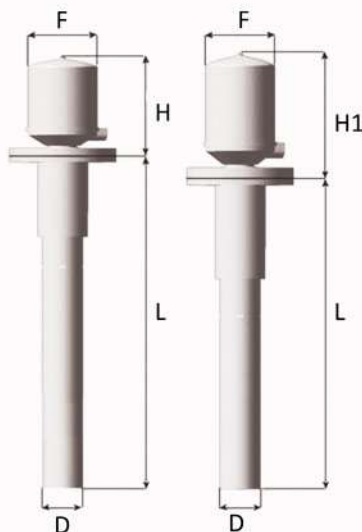
اشتعال اراک
ESHTEAL ARAK
Since 1980

Water Level Control System For Steam Boilers

Direct mounted

Direct mounted vertical controllers employ the same principles of operation and piece parts as the chamber mounted equivalents except that the chamber is exchanged for a large round flange and the tube assembly for mounting the controller directly on to the boiler shell connection. a stilling or guide tube should be provided, which may be fixed or removable, to ensure that the float rod is not damaged and the correct vertical movement is achieved.

Sizing Of Direct Mounted Model



BDO 150psi

Model		L	F	H	H1	D
Class	Switches					
LC.D.A3.40	1			193	303	80
	2			293	307	80

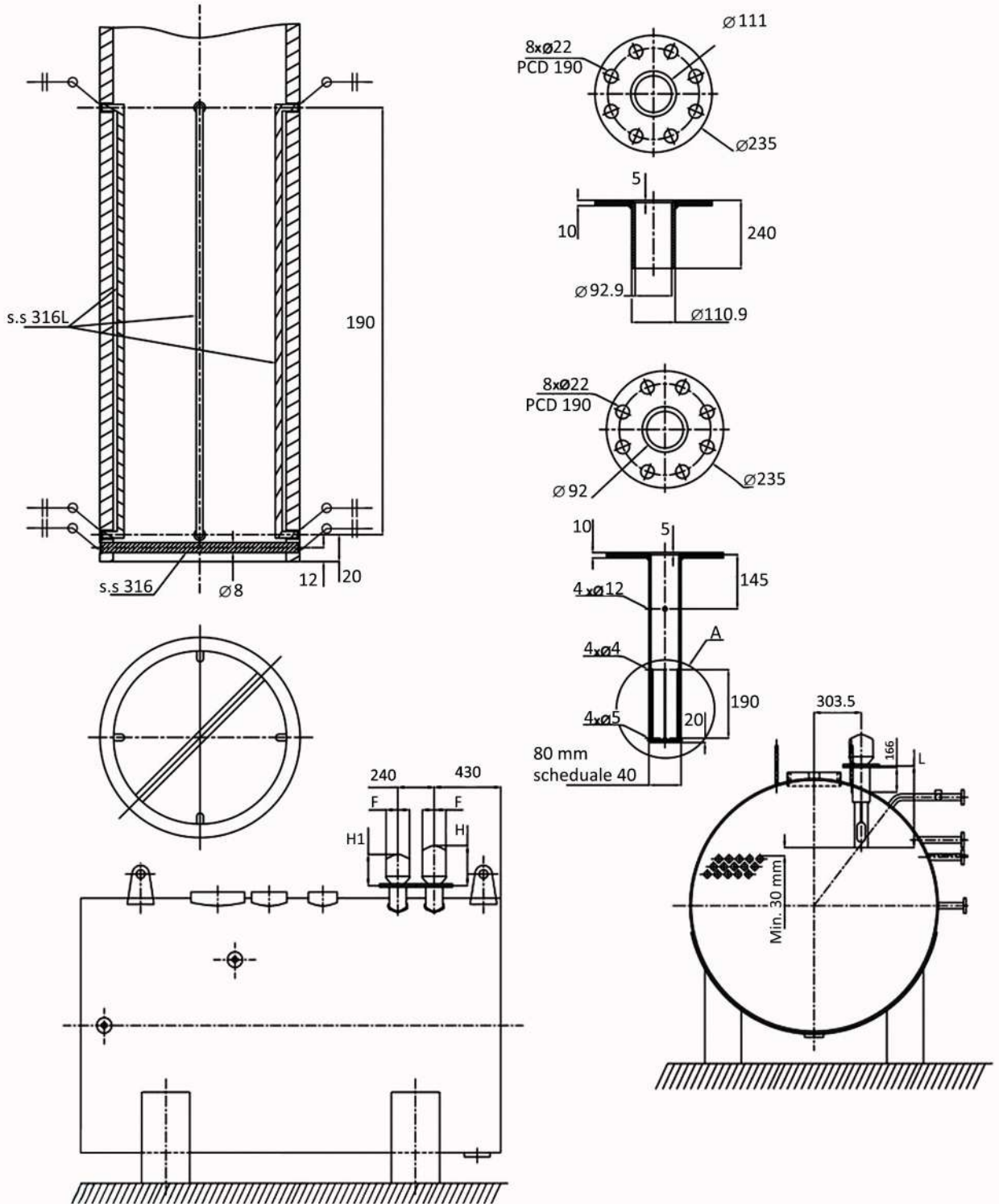
تماس 24 ساعته حتی تعطیلات

09190345384 09128448763 02166479486

www.Controltak.com
Controltak@gmail.com

تلگرام Controltak
اینستاگرام Control-Tak

Water Level Control System For Steam Boilers



تماس 24 ساعته حتی تعطیلات